



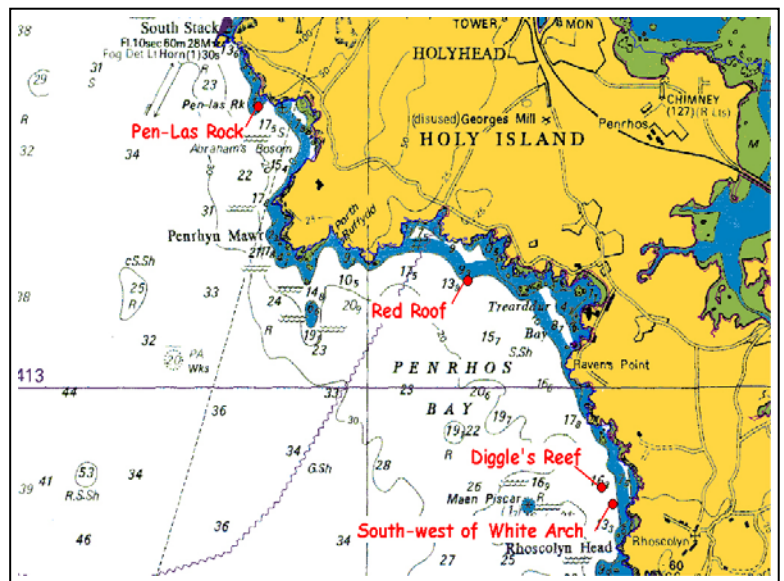
West Anglesey Weekend

6th & 7th May 2006



Introduction

This Seasearch weekend marked the start of the North Wales Seasearch diving for 2006. Exposed to the prevailing winds, this part of the North Wales coast can be rather unpredictable in terms of diving conditions, but this weekend we were favoured with calm conditions and even some sun! The aim of the diving this weekend was to build on the Seasearch dives of past years by diving previously unsurveyed sites and adding to our knowledge about the undersea habitats and species in this part of North Wales. Eleven divers took part, diving from a RIB chartered from SBS (run by Aubrey Diggle).



Reproduced from Admiralty charts by permission of the Controller of Her Majesty's Stationary Office and the UK Hydrographic Office (www.ukho.gov.uk).
Not to be used for navigation

A total of 148 species were recorded over the weekend. Some of the more unusual records were the nudibranch *Crimora papillata* which is a species with a more southern distribution, burrowing sea cucumbers *Neopentadactyla mixta*, the nationally scarce sponge *Tethyspira spinosa* and some large colonies of the potato crisp bryozoan *Pentapora foliacea*. Four new sites were surveyed and 22 Seasearch forms were completed (9 Surveyor forms and 13 Observation forms).

Red Roof

A low-lying and silty reef of bedrock with large boulders, cobbles and pebbles between 16-18m depth. Patches of gravel with burrowing sea cucumbers *Neopentadactyla mixta* to the south-east of the reef. Bryozoans and dead men's fingers were common on the reef. Large colonies of the boring sponge *Cliona celata* and the potato crisp bryozoan *Pentapora foliacea* were seen.

South-west of White Arch

Rock outcrop surrounded by bedrock reef with gullies and short walls. Kelp and mixed seaweeds present in the shallows and mixed and dense faunal turf recorded down to 17m depth.



A long-spined sea scorpion



Different sponges at Pen-Las



The nationally scarce sponge
Tethyspira spinosa

Diggle's Reef

Bedrock reef running perpendicular to the shoreline with the shallowest area just in the kelp zone at 8m depth and extending to about 17m where it ended in coarse sand. The reef was dominated by a dense covering of tubes of the worm *Sabellaria spinulosa* and the sea squirt *Molgula manhattensis*. Some large colonies of boring and elephant hide sponge and potato crisp bryozoan *Pentapora foliacea*.

Pen-Las Rock

Large boulders and bedrock pinnacles closer in shore leading into bedrock reef with ridges and gullies to the southwest at depths between 9-16.5m. Dense turf of branching bryozoans and hydroids with a notable number of sponges, including the nationally scarce *Tethyspira spinosa* which was relatively common at this site.

(All depths are as recorded below sea level and not corrected to chart datum.)

Names of surveyors on the trip:

Paul Brazier Anne Carter Shuna Hartley Caroline Sampson Simon Payne
 Claire Payne Harry Goudge Ian Patton-Smith Rohan Holt Paul Kay Lucy Kay

Many thanks to you for taking part in the Seasearch weekend and for all the useful data that you have collected. Thanks also to our skipper Aubery Diggle for helping locate the sites and taking care of us during the diving over the weekend.

Table 1: List of the number of species recorded from each Phylum.

Species summary for West Anglesey May 2006					
Phylum	Common Name	No. of Species	Common species		
Porifera	Sponges	25	Yellow boring sponge	<i>Cliona celata</i>	
			Elephant hide sponge	<i>Pachymatisma johnstonia</i>	
Cnidaria	Anemones, hydroids, corals, jellyfish	24	Dead men's fingers	<i>Alcyonium digitatum</i>	
			Antenna hydroid	<i>Nemertesia antennina</i>	
Platyhelminthes	Flatworms	1	Candy stripe flatworm	<i>Prosthecaraeus vittatus</i>	
Annelida	Segmented worms	3	Bispiral fan worm	<i>Bispira volutacornis</i>	
			Sand tube worm	<i>Sabellaria spinulosa</i>	
Crustacea	Lobsters, crabs, barnacles	13	Velvet swimming crab	<i>Necora puber</i>	
Mollusca	Shells, sea slugs	15	Arctic cowrie	<i>Trivia arctica</i>	
Bryozoa	Sea mats	15	Hornwrack	<i>Flustra foliacea</i>	
			Potato crisp bryozoan	<i>Pentapora foliacea</i>	
Echinodermata	Starfish, urchins, sea cucumbers	9	Common starfish	<i>Asterias rubens</i>	
			Common sunstar	<i>Crossaster papposus</i>	
			Bloody Henry starfish	<i>Henricia sp.</i>	
Subphylum Tunicata	Sea squirts	13	Stalked colonial sea squirt	<i>Aplidium punctum</i>	
Subphylum Pisces	Fish	13	Ballan wrasse	<i>Labrus bergyllta</i>	
			Lesser spotted dogfish	<i>Scylliorhinus canicula</i>	
Algae	Seaweeds		Kelp	<i>Laminara hyperborea</i>	
			Red seaweed	<i>Plocamium cartilagineum</i>	
Total Species		148			

Produced by Marine Wildlife for Seasearch and the Countryside Council for Wales 29 March 2007. Photographs courtesy of Paul Kay

