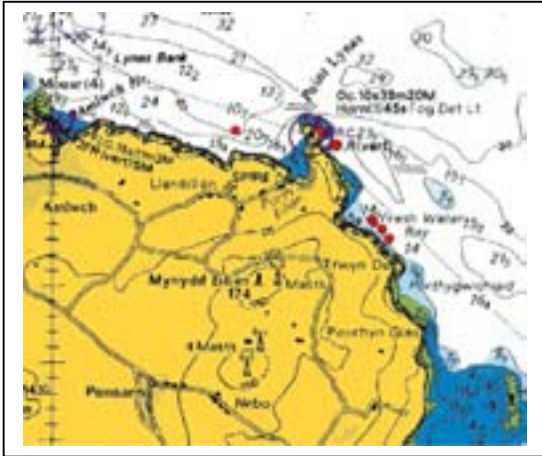


The North and East coast of Anglesey has a variety of underwater habitats, from tideswept offshore pinnacles to sheltered silty bays. For the Seasearch weekend on the 9th and 10th of August the weather was very poor, with strong south-westerly winds and torrential rain limiting our dive site options. The sites dived were on the west side of Point Lynas and also to the southeast of Point Lynas.



Reproduced from Admiralty chart 1977 by permission of the Controller of Her Majesty's Stationery Office and the UK Hydrographic Office (www.ukho.gov.uk). Not to be used for navigation.

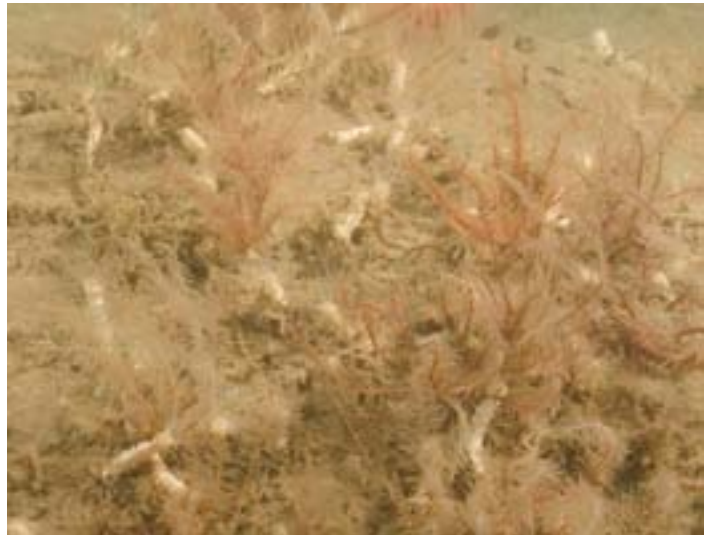
Four sites were surveyed over the two days and a total of thirteen Observation forms and seven Survey forms were completed.

The first site was to the west of Porth Eilian. The seabed was gradually sloping bedrock, with gullies, pinnacles and crevices, which was in most places covered with dense featherstars and other invertebrates. In one area there was a large aggregation of sea cucumbers (*Ocnus lactea/planci*). In deeper water the bedrock gave way to sand.



Dense featherstars *Antedon bifida* and a dead man's finger *Alcyonium digitatum* (RH)

Two sites close to the jetty on the east side of Point Lynas were surveyed. The seabed here was a mixture of different types, including rocky reef, mixed sediments and mud. There was a gradient from the sheltered, silty region of the bay out to the steeply sloping tideswept headland. In the silty areas the rock had quite high numbers of the silt-tolerant round orange sponge *Suberites carnosus*. In deeper water, where the tidal flow is greater, there were many plumose anemones *Metridium senile* and hornwrack *Flustra foliacea*.



Aggregation of sea cucumbers *Ocnus lactea/planci* (the white blobs!) (RH)



Silty bedrock with the sponge *Suberites carnosus* (RH)

North East Anglesey Seasearch, August 9th and 10th 2008

The fourth site was in Freshwater Bay. The seabed here was very varied with bedrock, boulders, sandy sediment and mixed ground. In places there were brittlestar beds (mainly *Ophiothrix fragilis*) on the sandy sediment. The mixed sediment was mostly muddy sand with shell, cobbles and small boulders and was characterised by many brittlestars *Ophiura albida* and burrowing anemones *Cerianthus loydii*. The rock had a mainly bryozoan turf and became more silty in shallower water. As with the site east of Point Lynas the rock in deeper water had plumose anemones *Metridium senile* and dead man's fingers *Alcyonium digitatum*. Of interest at this site was the small warty crab, or strawberry crab, *Eurynome aspersa*. Although this species appears to be widely distributed around the UK, it is not often recorded by divers.



Brittlestars *Ophiothrix fragilis* (larger animals in this picture) and *Ophiura albida* (2 small brittlestars on right) (RY)



Burrowing anemone *Cerianthus loydii* (RY)

Strawberry crab *Eurynome aspersa* (PK)



Species Summary for North Anglesey 2008.			
Phylum	Common Name	No. of Species	Most Frequently Encountered Species
Algae	Seaweed	8	<i>Laminaria hyperborea</i> , <i>Plocamium cartilagineum</i>
Porifera	Sponges	9	<i>Suberites carnosus</i> , <i>Raspalia ramosa</i> , <i>Stelligera rigida</i>
Cnidaria	Anemones, Hydroids, corals, jellyfish	16	<i>Metridium senile</i> , <i>Urticina sp.</i> , <i>Alcyonium digitatum</i>
Annelida	Segmented Worms	7	<i>Chaetopterus variopedatus</i> , <i>Lanice conchilega</i>
Platyhelminthes	Flatworms	1	<i>Prostheceraeus vittatus</i>
Crustacea	Lobsters, Crabs, Barnacles	16	<i>Necora puber</i> , <i>Cancer pagurus</i> , <i>Hommarus gammarus</i>
Mollusca	Shells, Sea Slugs, Octopus	12	<i>Archidoris pseudoargus</i>
Phoronida	Horseshoe worms	1	<i>Phoronis sp.</i>
Bryozoa	Seamats	11	<i>Crisia sp.</i> , <i>Bugula sp.</i> , <i>Cellaria sp.</i> , <i>Alcyonidium diaphanum</i>
Echinodermata	Starfish, Urchins	8	<i>Ophiura albida</i> , <i>Antedon bifida</i> , <i>Asterias rubens</i>
Chordata - Tunicata	Sea Squirts	6	<i>Morchellium argus</i> , <i>Botryllus schlosseri</i>
Chordata - Pisces	Fishes	11	<i>Callionymus sp.</i> , <i>Ctenolabrus rupestris</i> , <i>Labrus bergylta</i> , <i>Parablennius gattorugine</i>
Total Species		106	

Big thanks to Seasearchers **Chris Barrett, Anne Carter, Wendy Cooke, Jon Curwin, Rebecca Curwin, Hannah Curwin, Rohan Holt, Lucy Kay, Paul Kay, Kirsten Ramsay, Ruth Sharratt and Richard Yorke** who completed a total of 13 observer and 7 surveyor forms.

Thanks also to Elfyn Jones and the Julie Ann.

Produced by Kirsten Ramsay on 22nd September 2008

All photographs Copyright of Rohan Holt (RH), Richard Yorke (RY) and Paul Kay (PK)

