

Summary of Seasearch Surveys carried out in 2014 in Coquet to St Mary's recommended Marine Conservation Zone

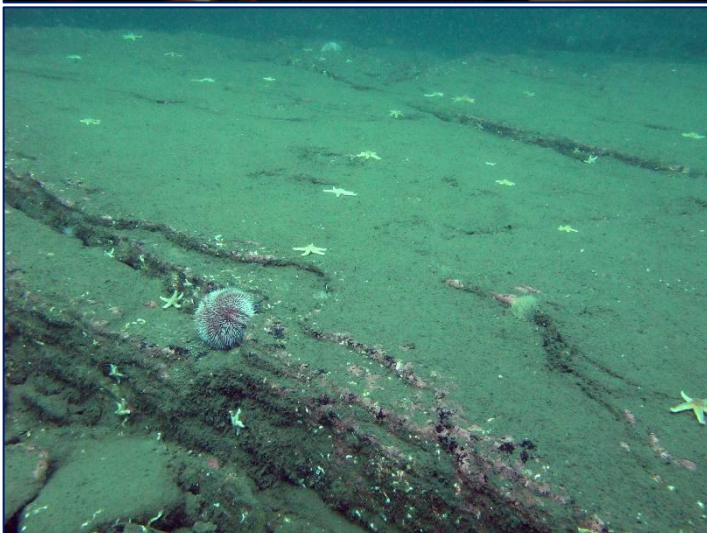
Seasearch survey dives were carried out at nine locations within the Coquet to St Mary's rMCZ between June and September 2014. The results are summarised in the table below and the locations are mapped on p.3.

Site No.	Survey details
1	22 nd June 2014, 13.30 hours for 47 minutes. 55° 7.191 N, 1° 27.605 W. 3 x Survey forms and 1 x Observation form completed by Nicola Faulks, Fabrice Stephenson, Michelle Simpson and Kerry Netherway. One broad scale habitat recorded: A4.2 Moderate energy circalittoral rock. Boulder reef at around 16m-17m (BCD) depth with sparse faunal turf including <i>Alcyonium digitatum</i> , <i>Flustra foliacea</i> , <i>Thuiaria thuja</i> and <i>Nemertesia antennina</i> . Marine Recorder Event Refs: NE14/030, NE14/035, NE14/041 and NE14/122.
2	22 nd June 2014, 11.00 hours for 51 minutes. 55° 11.030 N, 1° 28.803 W. 4 x Survey forms and 1 x Observation form completed by Paula Lightfoot, Michelle Simpson, Christopher Newton, Nicola Faulks and Gary Gubby. One broad scale habitat recorded: A3.2 Moderate energy infralittoral rock. Bedrock ridges at around 3m-7m (BCD) depth with <i>Laminaria hyperborea</i> kelp park and an understorey of foliose red algae on the upper surfaces (IR.MIR.KR.Lhyp.Pk) and surge gullies between the ridges with a faunal turf of crustose sponges and colonial ascidians (IR.FIR.SG). Marine Recorder Event Refs: NE14/031, NE14/032, NE14/033, NE14/034 and NE14/042.
3	8 th July 2014, 13.58 hours for 53 minutes. Drift dive from 55 7.646 N, 1 29.080 W to 55 07.852 N, 1 29.153 W. 1 x Survey form completed by Paula Lightfoot. One broad scale habitat recorded: A4.2 Moderate energy circalittoral rock. Reef of bedrock and boulders between 4.5m and 9m (BCD) depth. <i>Alcyonium digitatum</i> locally common on raised areas along with <i>Tubularia indivisa</i> and <i>Nemertesia antennina</i> , but most flat surfaces were grazed/scoured and mainly covered in <i>Spirobranchus</i> tubes. <i>Clavellina lepadiformis</i> common throughout the survey site. Marine Recorder Event Ref: NE14/053.
4	17 th July 2014, 14.19 hours for 42 minutes and 25 th July 2014, 16.00 hours for 50 minutes. 55° 7.836 N, 1° 29.140 W (shot left in place between the two dates). 1 x Survey form and 1 x Observation form completed by Paula Lightfoot. One broad scale habitat recorded: A4.2 Moderate energy circalittoral rock. Bedrock reef at around 7m to 8m (BCD) depth, very flat with occasional steps. Grazed faunal turf and coralline algal crusts, predominantly <i>Alcyonium digitatum</i> , <i>Clavellina lepadiformis</i> and <i>Spirobranchus</i> . Marine Recorder Event Refs: NE14/054 and NE14/058.
5	20 th July 2014, 09.30 hours for 45 minutes. 55° 6.308 N, 1° 26.943 W. 4 x Survey forms and 1 x Observation form completed by Paula Lightfoot, John Lampett, Tim Parmley, Winter Dotto and Debbie Dallison. One broad scale habitat recorded: A4.2 Moderate energy circalittoral rock. Reef of bedrock and boulders between 17m and 20m (BCD) depth. Predominant faunal turf species <i>Thuiaria thuja</i> , <i>Alcyonium digitatum</i> and <i>Flustra foliacea</i> . Marine Recorder Event Refs: NE14/056, NE14/067, NE14/072, NE14/073 and NE14/112.

Survey dives on the 22nd June and 20th July were carried out with financial support from the North Sea Wildlife Trusts.

6	20 th July 2014, 11.30 hours for 50 minutes. 55° 7.929 N, 1° 28.471 W. 4 x Survey forms and 1 x Observation form completed by Paula Lightfoot, John Lampett, Tim Parmley, Winter Dotto and Debbie Dallison. One broad scale habitat recorded: A4.2 Moderate energy circalittoral rock. Reef of bedrock, boulders and pebbles at around 18m (BCD) depth, with some large rock outcrops rising up to 3m above the surrounding seabed. Predominant faunal turf species <i>Thuiaria thuja</i> , <i>Alcyonium digitatum</i> and <i>Flustra foliacea</i> . Marine Recorder Event Refs: NE14/057, NE14/066, NE14/071, NE14/074 and NE14/111.
7	7 th August 2014, 11.46 hours for 53 minutes. 55° 4.859 N, 1° 27.292 W. 1 x Observation form completed by Paula Lightfoot. One broad scale habitat recorded: A4.2 Moderate energy circalittoral rock. Very rugged, topographically complex reef with ridges, walls and overhangs. Corraline algal crusts and faunal turf, predominantly <i>Clavellina lepadiformis</i> , <i>Alcyonium digitatum</i> and <i>Flustra foliacea</i> . Marine Recorder Event Ref: NE14/093.
8	6 th July 2014, 9.30 hours for 42 minutes. 55° 6.268 N, 1° 26.174 W. 1 x Observation form completed by Peter Routledge. Metal wreckage scattered on a sand seabed (A5.2 Subtidal sand) at around 29m (BCD) depth. Wreckage predominantly covered in <i>Alcyonium digitatum</i> . Marine Recorder Event Ref: NE14/096.
9	2 nd September 2014, 14.31 hours for 56 minutes. 55° 6.115 N, 1° 28.365 W. 1 x Observation form completed by Paula Lightfoot. One broad scale habitat recorded: A4.2 Moderate energy circalittoral rock. Reef of small boulders and cobbles, heavily grazed/scoured, predominantly covered in <i>Spirobranchus</i> tubes. Marine Recorder Event Ref: NE14/100.

Photos clockwise from top left: *Alcyonium digitatum* on rock reef (site 5); reef dominated by *Flustra foliacea* (site 6); *Hyas* sp. on a *Laminaria hyperborea* frond in kelp park at site 2; Echinoderm-grazed reef with faunal and algal crusts (site 3).



Map of the nine locations in Coquet to St Mary's dMCZ surveyed by Seasearch in 2014:

